



## SCM – WMS

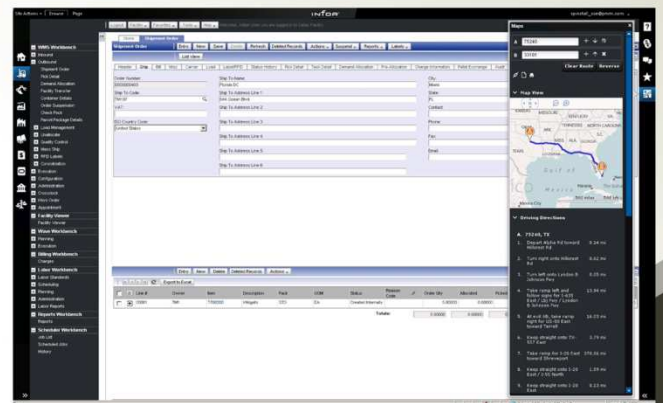


### SCM - WMS

WMS is a best-in-class warehouse management, transportation management, labor management, and 3PL Billing system into a single application on a unified database to reduce the complexity of warehousing and logistics management and clarify daily decision making.

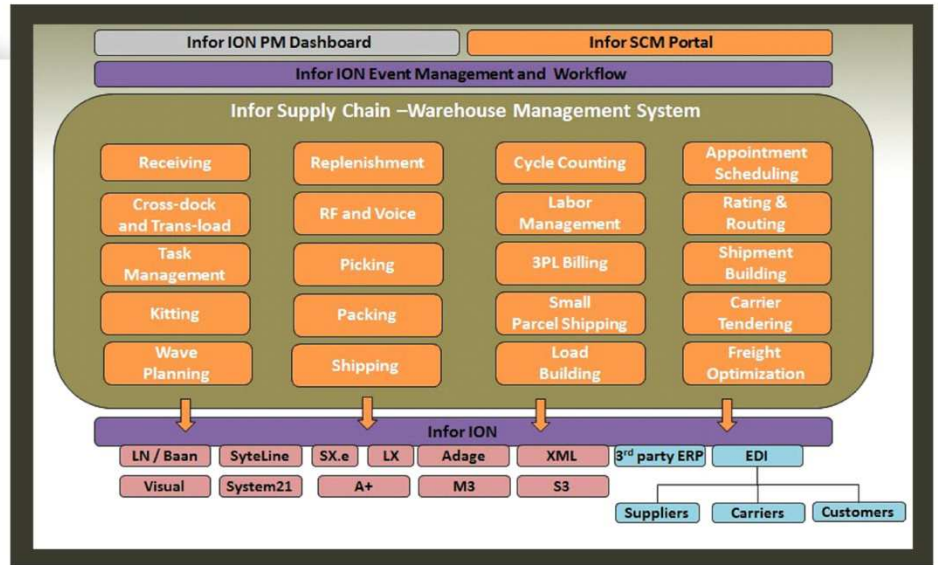
Designed to be user friendly, the system features graphical user interface (GUI), powerful query capabilities, multiple data views, built-in security, fully integrated RF Task Management, Graphical label design, Internet accessibility and more. The product excels at high-performance receiving, put away, replenishment, allocation, picking, shipping and labor management. The system can be delivered standalone or for connectivity to the most popular ERP, transportation solutions.

Whether your company deals in Manufacturing, Transportation, 3rd Party Logistics, Retail, or any other industry that relies on the efficiencies of warehouse management to improve its bottom line, the ability of a warehouse management system to create unparalleled transparencies in all facets of the supply chain is not only valuable, it can be the edge that separates your company from its competition.



Specialized by Industry

- 3PL
- Automotive
- Aerospace and Defence
- Chemicals
- Distribution
- Food and Beverage
- General Manufacturing
- Healthcare
- High Tech
- Industrial Equipment and Machinery



SCM – Warehouse Management System

- **Receiving** — Accelerate receiving processes by clearly identifying inventory and improving tracking capabilities with or without inbound orders, advanced shipment notices (ASNs), or pre-assigned tag/container ID labels.
- **Storage** — Automatically put away material in the best location according to your facility and equipment including open floor, static single and double deep rack, flow rack, shelving, freezer/cooler, pallet lanes, push-back rack, carousel, automatic storage and retrieval, bulk tank, and other factors.
- **Cross-docking** — Benefit from the ability to either pick items or move them directly from the inbound dock to the outbound dock, thereby avoiding storage and replenishment and reducing staffing and equipment needs, space requirements, and inventory carrying costs.
- **Advanced Kitting** — Perform light manufacturing and assembly work including kit-to-order, kit-to-stock, configure to-order, special packaging/labeling, postponement, and accessories.
- **Wave Planning** — Gain operational efficiency and control by grouping orders into waves to be planned and released together.
- **Picking** — Following wave planning, make released picks available to operators who can then pick orders quickly, without errors, using voice-directed, RF-directed, RF-assisted, label, list, cluster, or batch picking. Voice-directed picking lets you eliminate lists, labels, and scanners and ensure a safer, more efficient, real-timework environment.

- **Packing** — Use system-directed or assisted packing to support user-configurable container types including cartons, pallets, containers, and others with a variety of attributes including inner and outer dimensions, maximum product weight for a container, and minimum/maximum fill percentage parameters.
- **Shipping** — Load contents onto a trailer, issue a final release, and coordinate proper ship paperwork such as container pack list, master pack list, bill of lading, master bill of lading, and manifests.
- **Multiple Inventory Ownership, Billing, and Invoicing** — The ability to track multiple inventories, employ multiple business rules, and manage billing for multiple customers improves 3PL and distributor efficiency.
- **Inventory Control and Cycle Counting** — Multiple units of measure, lot control, and catch weights improve inventory accuracy and know what, where, and how much inventory is in your warehouse using cycle counting to regularly maintain the most accurate portrait of your inventory levels.
- **Labor Management** — Schedule and monitor all direct and indirect labor and provide valuable feedback and status updates to workers and supervisors as activities are completed. Support reasonable expectancies, as well as engineered labor standards, and profit from integrated time and attendance.
- **3PL Billing** — Track and assign charges to virtually any warehouse event from inventory handling storage costs to fulfillment and get a better handle on your profit margins and costs.
- **Transportation and Logistics planning and execution** — Offers a complete solution footprint to handle all your transportation processes from planning to execution and international trade. Create a plan that most effectively meets the demand for moving products and execute that plan through collaboration with vendors and logistics providers.
- **Event Management real-time alerts and resolution** — Monitor transactions and automatically respond to any user-defined exceptions, issues, or opportunities requiring immediate action. Send real-time alerts to upstream and downstream stakeholders so they can take the appropriate action to resolve, track, and escalate issues via a centrally accessible website.
- **Performance Management** — KPIs - Get the necessary key performance indicators (KPIs) and analytics to measure and analyze your business and gain a competitive edge in your industry. Embedded KPIs include available work summary by zone, carrier on-time delivery, cycle count accuracy, inventory adjustment analysis, inventory turns, and outstanding receipts.





## Our WMS Services

We specialize in the following WMS consulting services:

- Project Management
- Application Consulting
- Implementation Services
- Training and Education
- System Upgrades
- Enhancement and Customizations
- System Integrations
- Maintenance and Support
- Managed Services

## Our WMS Expertise

Below are a few highlights of our WMS expertise:

- Proficient in versions of WMS
  - WMS 4000
  - WMS 9.x
- Extensive experience of WMS system integration with backend ERP system
- SQL Server / Oracle database expertise
- Data management and Migration Services
- Consultants average 4+ years of WMS consulting and programming experience.
- Analyzing and optimizing logistics operations

### Business Intelligence

- > ION
- > ION BI and BA

### Complementary Solutions

- > DTsys Application
- > DTedi Transfer
- > Field Force Automation

### Enterprise Solutions

- > SyteLine ERP
- > LN ERP
- > System21 ERP
- > LX ERP
- > BPCS ERP
- > SCM-WMS

### TGS Solutions Pte Ltd.

Singapore Corporate Headquarters

190 Woodlands Industrial Park E5  
#05-02, Woodlands Bizhub,  
Singapore 757516.

Tel : +65 66598195  
Fax : +65 66598196  
e-mail : info@tgsworld.com